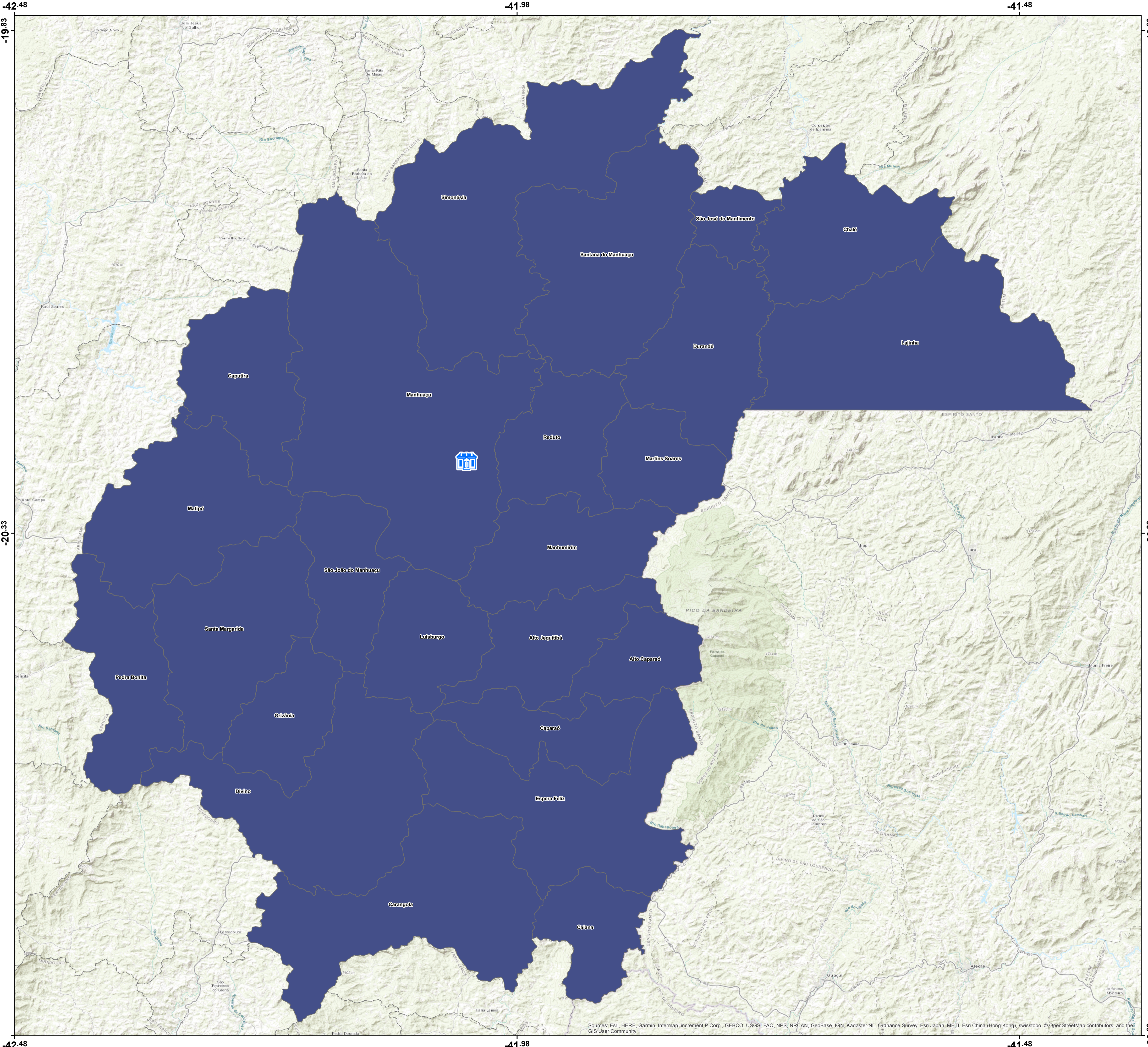
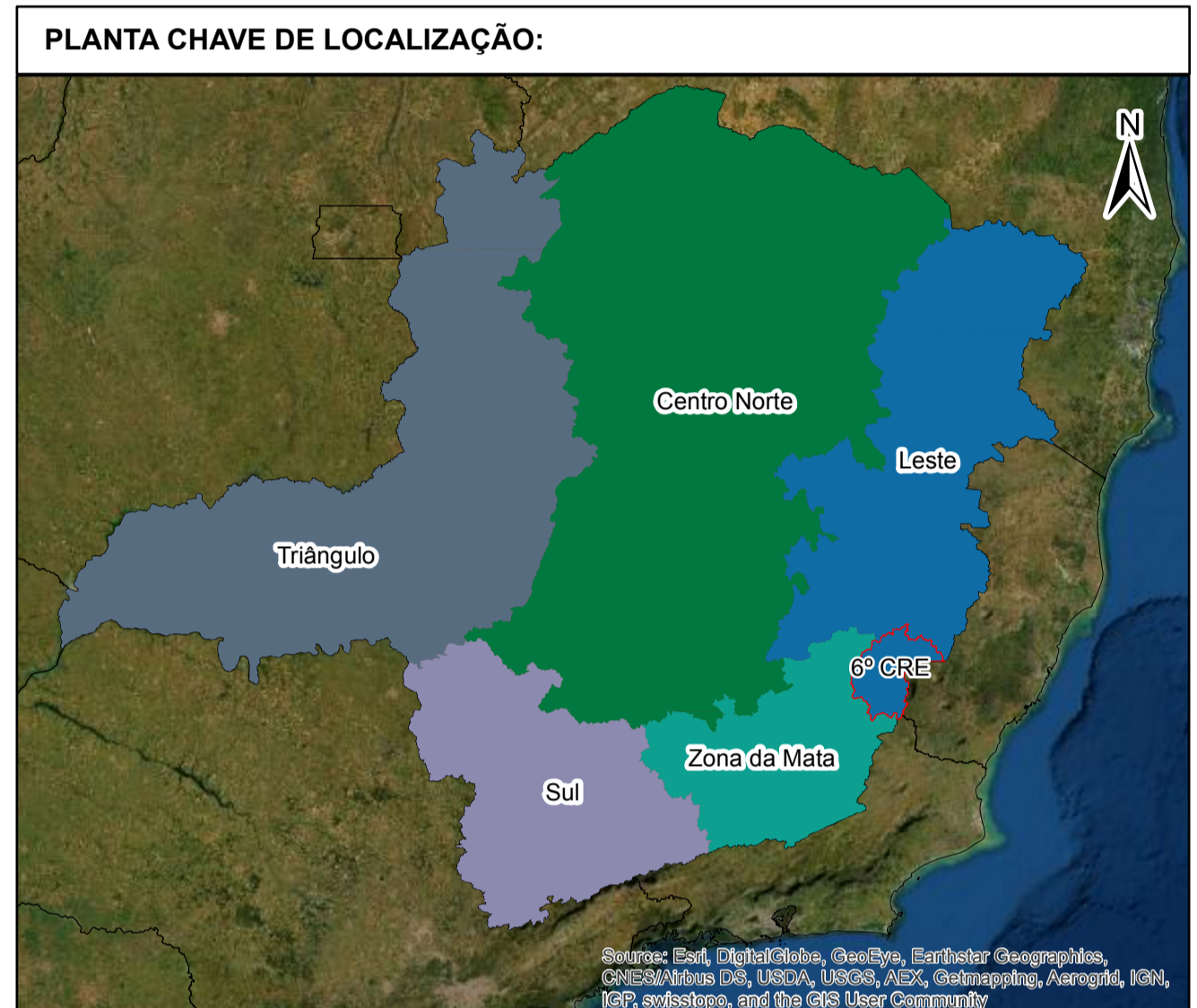
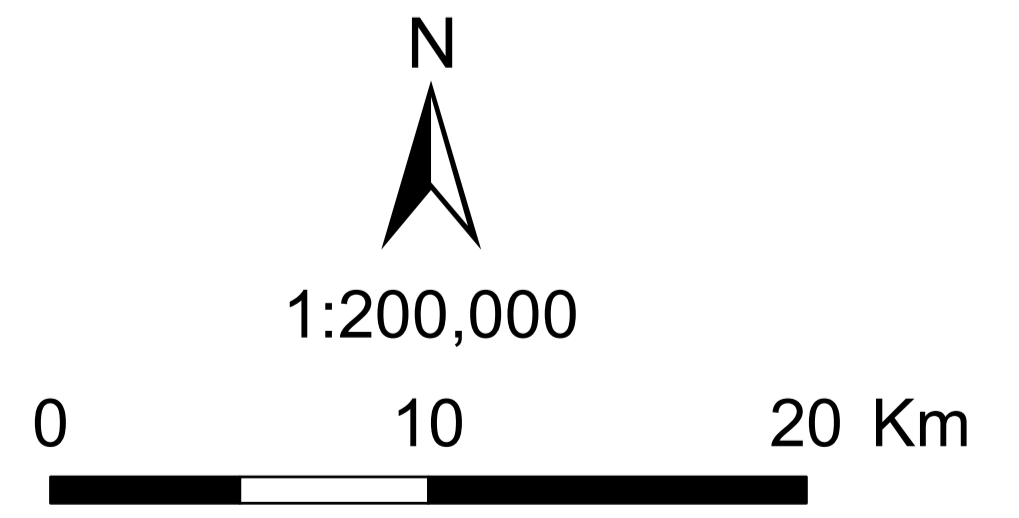




# 6º Conselho Regional Espírita de Minas Gerais - Manhuaçu



|            |                              |
|------------|------------------------------|
|            | Cidade Sede CRE              |
| <b>CRE</b> |                              |
|            | Cidades do Conselho Regional |



Datum: SIRGAS 2000  
 Projeção: Geográfica - unidades em graus decimais